

GDP AND NATIONAL ACCOUNTS in MEXICO¹

Measuring the informal economy

The National Institute of Statistics and Geography (INEGI) has made available the estimates of the Informal economy in the Mexico GDP for the years 2003 -2013. During the period the share of the Gross Domestic Product (GDP) contributed by the informal economy dropped slightly from around 27 percent to a still significant 24.8 percent.

These estimates are important advances in the country's methods for calculating National Accounts...They reflect a new base year (2008). And they meet the demand for better measurement of the contribution of the Value Added of the Informal Economy to the Gross National Product of the Total Economy.. Estimates are presented on the Gross Value of Production, the Intermediate Consumption, and Value Added both for the Informal Sector and Informal Employment, valued at current prices for the base year of 2008 and the implicit price index. In addition, information is included on remunerated and non-remunerated jobs of the Informal Economy.

The informal economy is related to the institutional sector of Households in the national accounts framework. Workers in this sector in Mexico include own-account workers, self-employed professionals, farmers, peasant agricultural workers, artisans, vendors, street vendors and other self-employed persons. Also included are persons in microbusiness-- helpers and family members without a formal employment contract who work either at the dwelling or outside of it.

Since the methods used to estimate the contribution of the segments of the informal economy to the national GDP use the new base year 2008 and are consistent with those used to prepare the national accounts, they now are available as part of Mexico's System of National Accounts.

INEGI invites practitioners and experts in the area to express their comments and make contributions on the content of this material.

¹ This announcement is based on "PIB y Cuentas Nacionales de México, Mediciones de la Economía Informal" published by the National Institute of Statistics and Geography (INEGI) at <http://www.inegi.org.mx/est/contenidos/proyectos/cn/informal/>

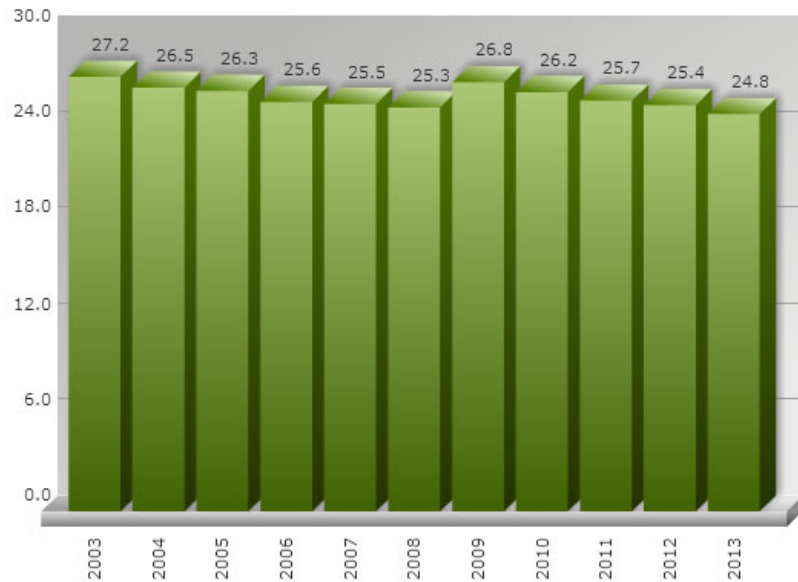
Share of the Informal Economy in Gross Domestic Product. Series 2003-2013

Year	2003	2004	2005	2006	2007	2008	2009	2010	2011	2012 ^R	2013 ^P
Gross Value Added Total Economy¹	7 302 821	8 299 895	9 028 899	10 120 003	10 962 144	11 941 199	11 568 456	12 723 475	14 021 257	15 106 359	15 447 556
Gross Value Added Informal Economy	1 984 233	2 199 161	2 373 403	2 590 500	2 793 589	3 017 060	3 105 229	3 337 191	3 562 933	3 778 171	3 838 013
Contribution	27.2	26.5	26.3	25.6	25.5	25.3	26.8	26.2	25.7	25.4	24.8

¹ Figures in millions of pesos at current prices

^R Revised figures as from the date indicated

^P Preliminary figures



2012 Figures Revised

2013 Preliminary Figures

Informal Economy as a Share of GDP, by Component. Series 2003-2013

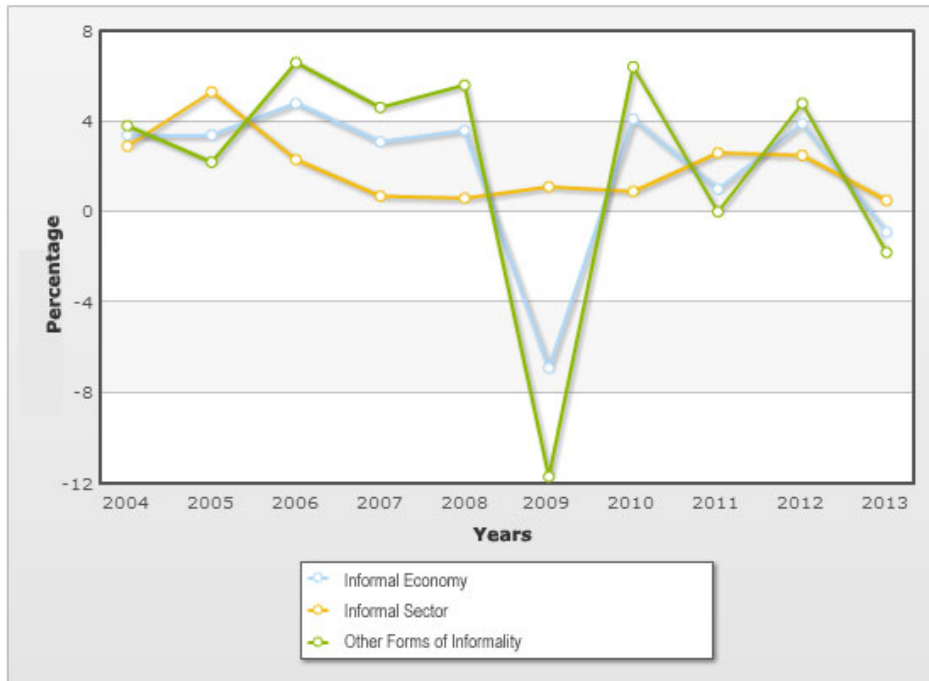
Year	Informal Economy	Informal Sector	Other Forms of Informality
2003	27.2	11.8	15.4
2004	26.5	11.3	15.2
2005	26.3	11.3	15.0
2006	25.6	10.7	14.9
2007	25.5	10.4	15.1
2008	25.3	9.5	15.8
2009	26.8	12.3	14.5
2010	26.2	11.7	14.5
2011	25.4	11.4	14.0
2012 ^R	25.0	10.8	14.2
2013*	24.8	11.3	13.5

^R Figures revised as from date indicated.

Percentage Variations of the Gross Aggregate Value, by Component. Series 2003-2013

Year	Informal Economy	Informal Sector	Other Forms of Informality
2004	3.4	2.9	3.8
2005	3.4	5.3	2.2
2006	4.8	2.3	6.6
2007	3.1	0.7	4.6
2008	3.6	0.6	5.6
2009	-6.9	1.1	-11.7
2010	4.1	0.9	6.4
2011	1.0	2.6	0.0
2012*	3.9	2.5	4.8
2013*	-0.9	0.5	-1.8

* Figures revised as of 2013



Figures revised as of 2013