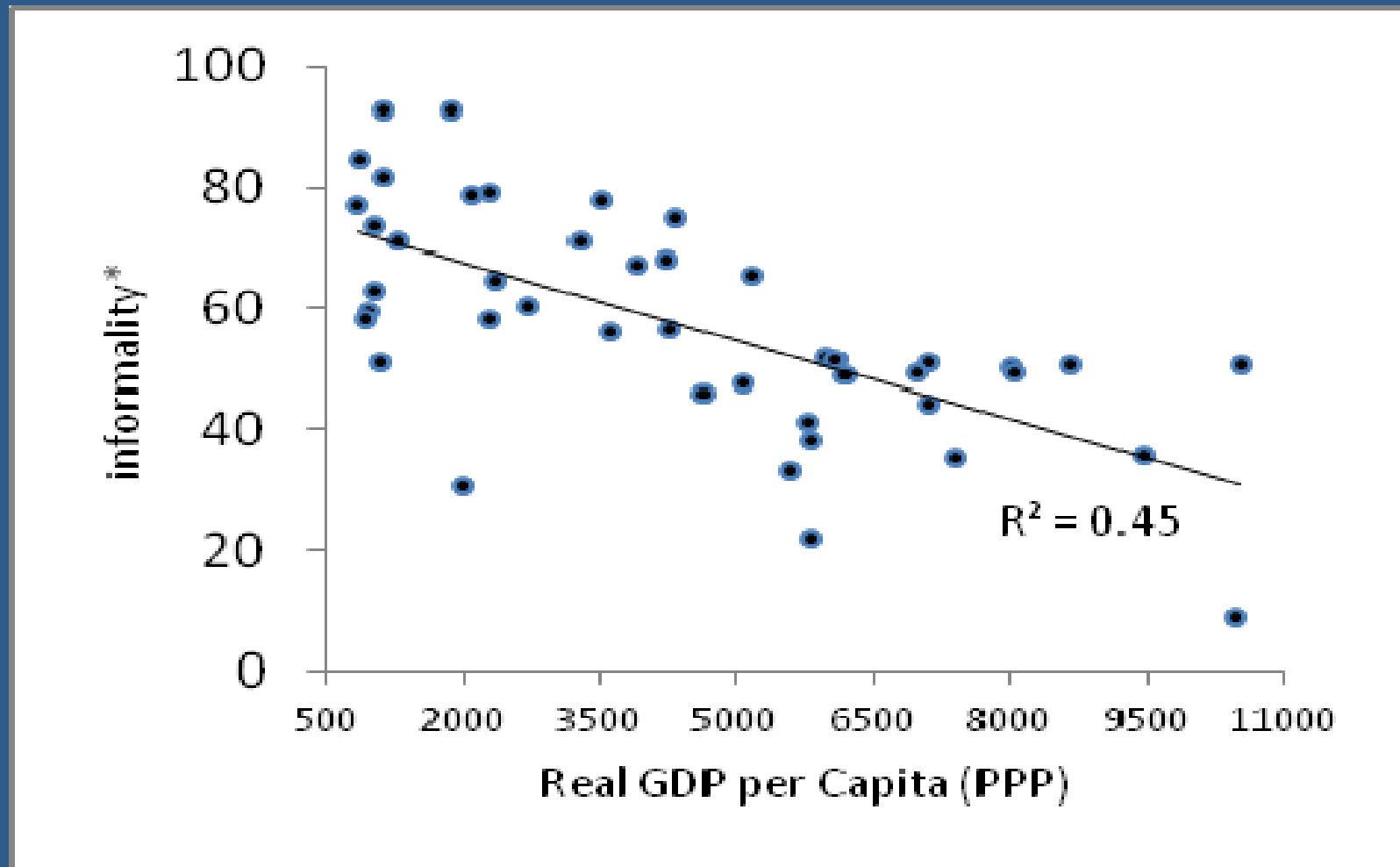


**What do we need to know about
the relationship between
informality, growth and poverty?**

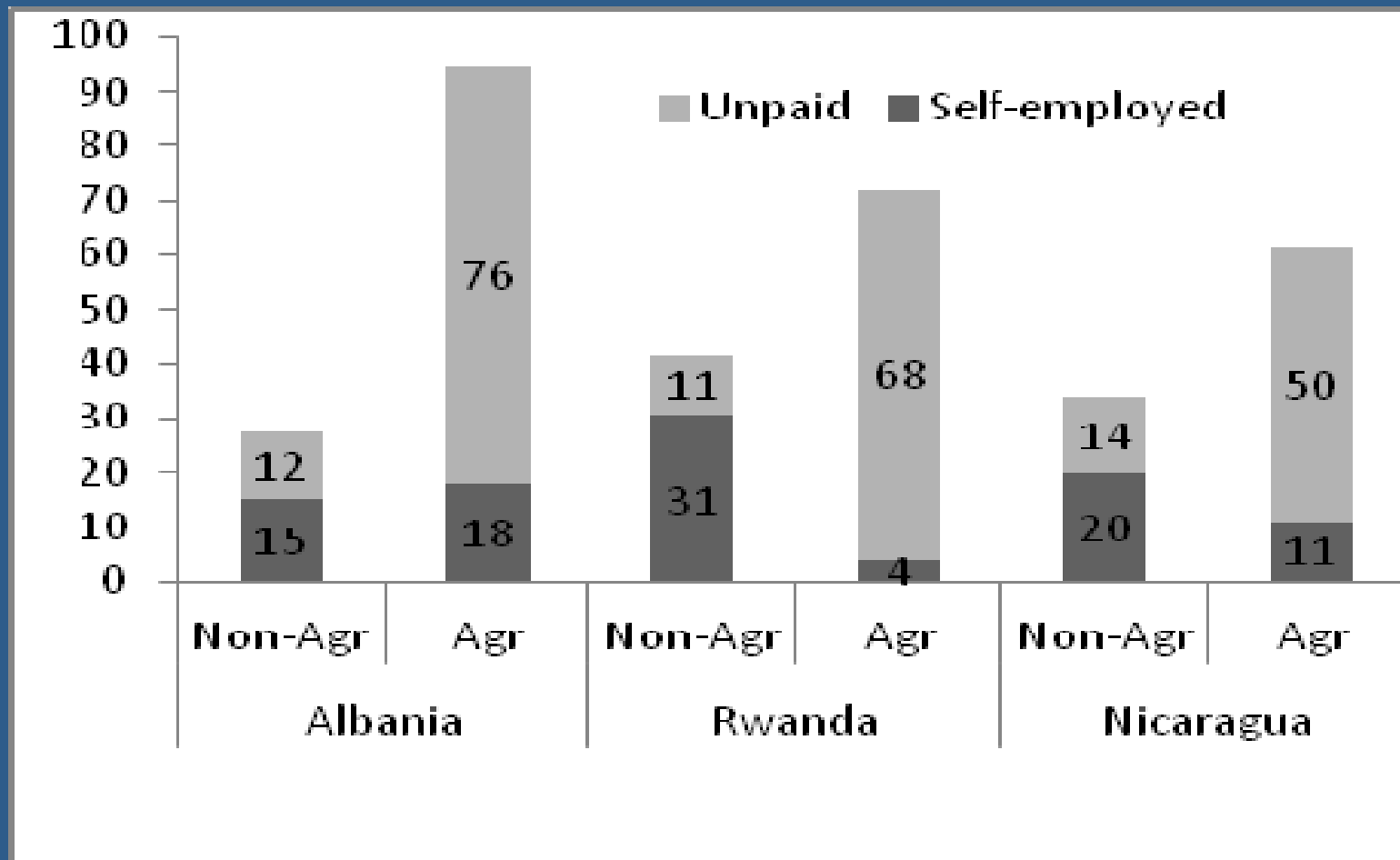
**What are the research puzzles and
gaps that need to be addressed?**



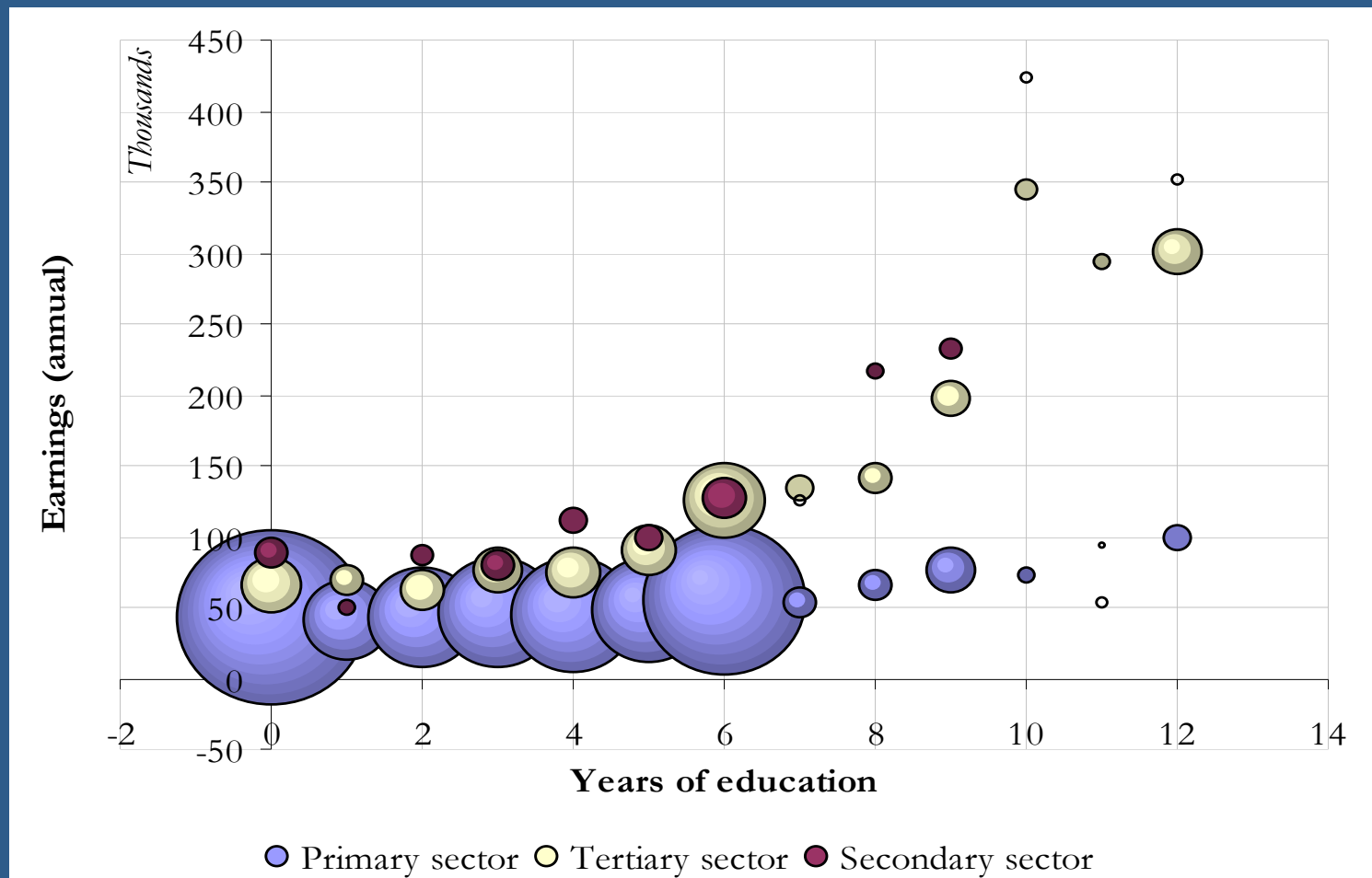
1. Growth reduces informality but it is more complicated



1. Growth reduces informality but it is more complicated



2. Poverty and informality are strongly correlated but it is more complicated (Rwanda)



2. Poverty and informality are strongly correlated but it is more complicated (Madagascar)

