



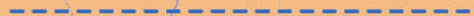
# WASTE WARRIORS OF DELHI

## LOCATING OUR WASTE PICKER COMMUNITIES ACROSS THE CITY

“

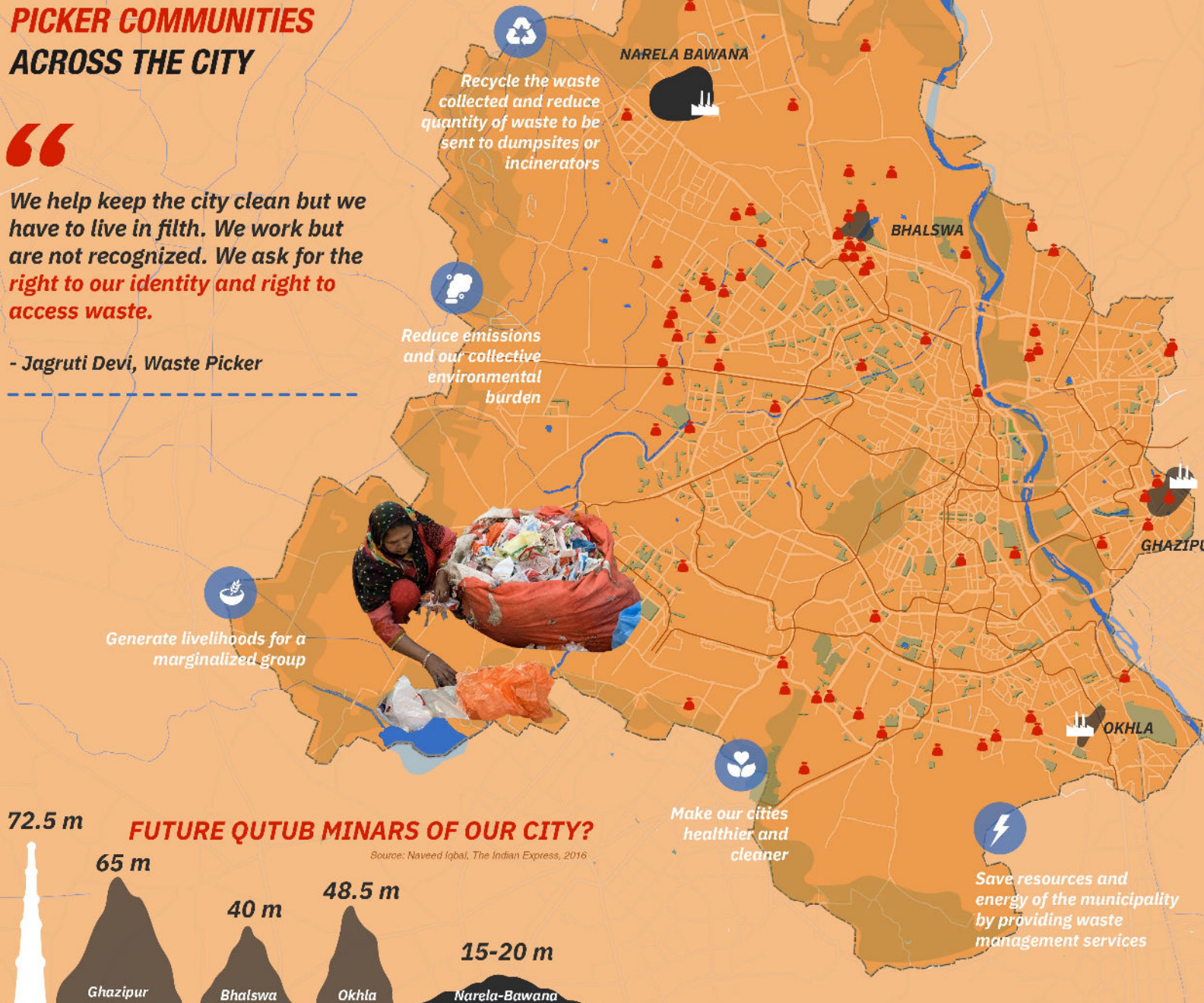
We help keep the city clean but we have to live in filth. We work but are not recognized. We ask for the right to our identity and right to access waste.

- Jagruti Devi, Waste Picker



## 72.5 m FUTURE QUTUB MINARS OF OUR CITY?

Source: Naveed Iqbal, The Indian Express, 2016



### 4 Rs of Waste pickers' Demands

- » **RECOGNITION** and integration into the waste management system
- » **REGISTRATION** and enumeration of waste pickers at the city level
- » **REPRESENTATION** in waste management related policymaking
- » **RIGHTS** and social protection

### KEY



## MULTIPLE CHALLENGES

Despite their immense contributions, waste pickers face many challenges including lack of recognition and workers' rights, lack of formal space for work, social stigma and harassment, and health hazards due to the nature of their work.





# JOURNEY OF A WASTE PICKER IN THE WASTE CHAIN SYSTEM

WASTE PICKERS ARE THE RECYCLERS OF OUR CITY!

MIXED WASTE DRY WASTE

WASTE-TO-ENERGY PLANT

## DO YOU KNOW?

Delhi only recycles 9% of its waste out of which 95% of the waste is recycled by the informal sector.

Source: UN, A New Circular Vision For Electronics, World Economic Forum, 2019

95%

"I collect, sort and transport 10-15 kgs of waste everyday and earn only 3000-5000 per month. The coming of compactors has reduced my income by 30%

"I have been recycling plastic since years and can differentiate all its types

FIRST LAYER OF SEGREGATION AT THE DHALAO

DHALAO

SECOND LAYER OF SEGREGATION ON THE BASIS OF QUALITY

## RECLAIMING THE WASTE

RECYCLING FACTORIES



LANDFILL

CH<sub>4</sub>

DUMP!

PRIVATE COMPANY OR MCD VEHICLE COLLECTS TRASH DIRECTLY FROM HOMES OR PICKS FROM DHALAOS

WASTE PICKER

GOES BACK TO THE LANDFILL

HEAT

RESIDUE

ASH

WASTE PICKER  
WASTE PICKER COLLECTS DRY WASTE FROM DHALAO

Paper

Glass

Metal

E-waste

Low Density Plastic

Multi-layered Plastic

High Density Plastic

WASTE PICKERS' NEIGHBOURHOOD

PRIVATE GODOWN

SMALL SCRAP DEALER

WHOLESALE SCRAP DEALER

FIRST LAYER OF SEGREGATION AT DOOR-TO-DOOR OR THE NEIGHBOURHOOD LEVEL



PUBLIC AREA



COMMERCIAL AREA



RESIDENTIAL AREA

## SOURCES OF WASTE

Waste Pickers play a critical role in taming the wild and growing beast that is solid waste in Delhi. They need proper allocation of space for their work, such as: space at the neighbourhood level for primary sorting, material recovery points and recyclable markets.

### SOURCES

Locations of waste-picker communities have been sourced from the membership data of the Delhi Roundtable on Solid Waste Management, and is not an exhaustive listing of all such settlements in Delhi.



SOCIAL DESIGN COLLAB

Illustrated by: Anchal Sayal & Nishtha Kashyap